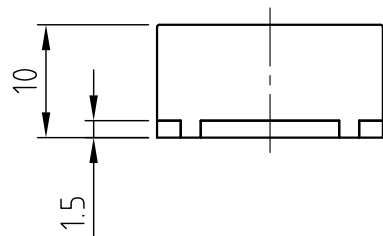
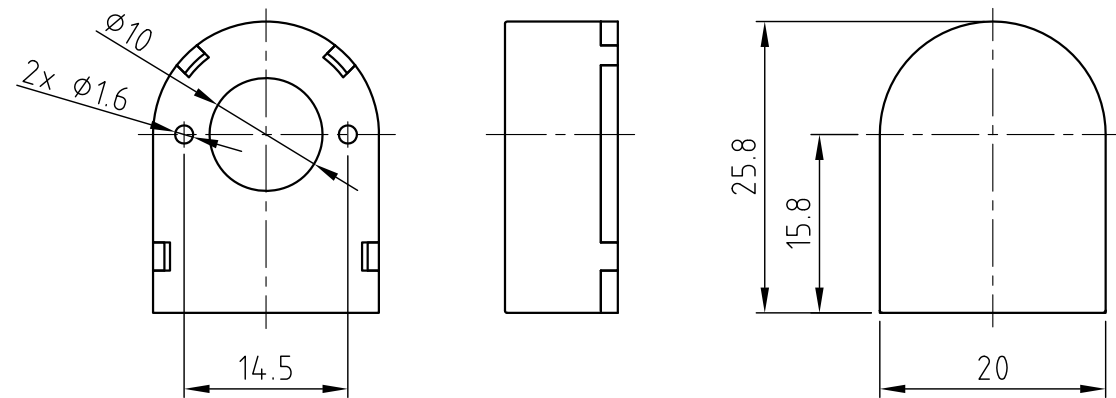
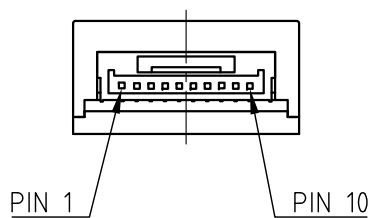


DIMENSION (UNIT : mm)



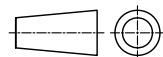
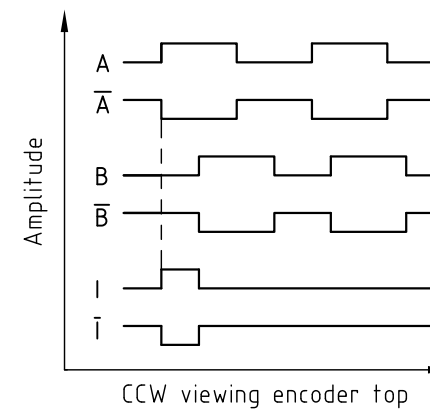
View X



X

PIN assignment JST GH - 10pole		Connecting cable ZK-NOE1-10-500-S
PIN No.	Function	Colour
1	GND	GN/WH (shielding)
2	A	GN
3	A\	BN
4	B\	GY
5	B	WH
6	I\	YE
7	I	OG
8	GND	BK
9	+ 5V	RD
10	GND	GN/WH (shielding)

Line Driver output signals



Surface specification  
DIN ISO 1302

General tolerances  
DIN ISO 2768- cK

Work piece edge  
DIN ISO 13715



	Name	Date
DRN	A.S.	06.04.16
CHKD		

NOE1  
(500, 1000, 2000 CPR)

REV	DESCRIPTION	DATE	NAME