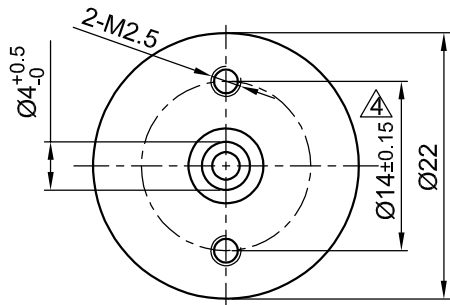
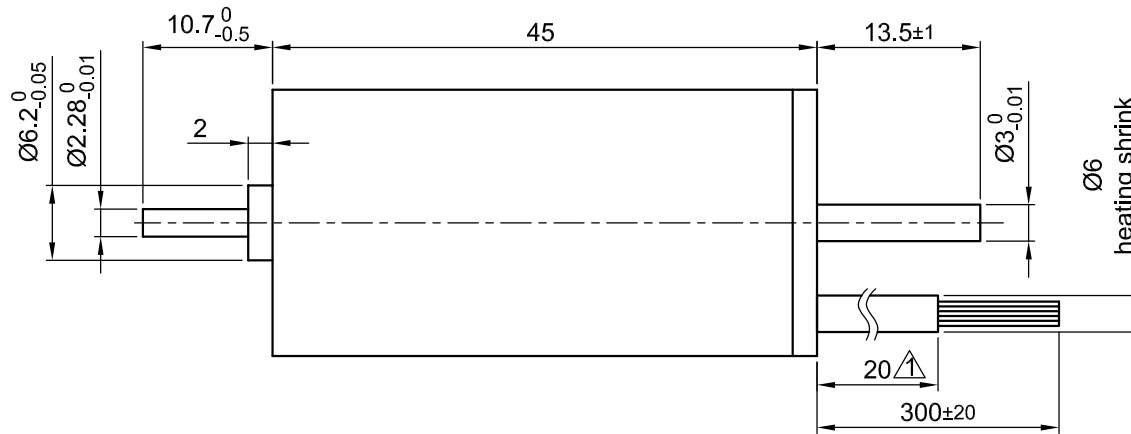


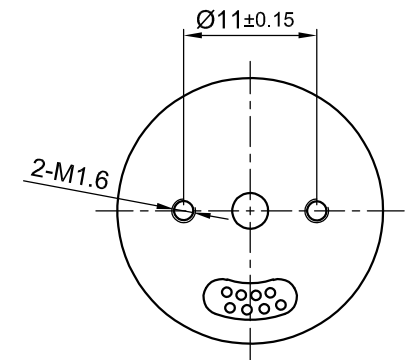
Front view and mounting



Side view

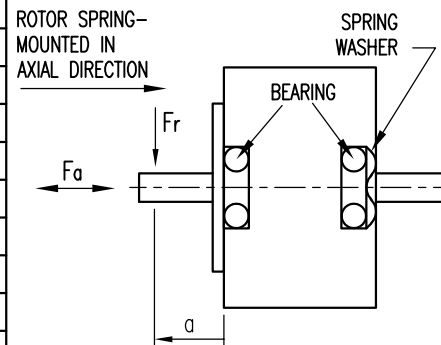


Rear view



| SPECIFICATION | CONNECTION | STAR |
|----------------------------------------------------------|------------|------------------------------------------------|
| NO OF POLES/PHASE | | 8/3 |
| VOLTAGE RATED (VDC) | | 24 |
| CURRENT RATED/PEAK (AMP) | | 0.265/0.795 |
| RESISTANCE/PHASE TO PHASE (Ohms) @25°C | | 23±15% |
| INDUCTANCE/PHASE TO PHASE (mH) @1KHz | | 6.2±20% |
| TORQUE RATED/PEAK (Nm) [lb.in] | | 0.008/0.024 [0.708/0.213] |
| TORQUE CONSTANT (Nm/A) [lb.in/A] | | 0.0302 [0.267] |
| POWER RATED (W) | | 4 |
| SPEED RATED/NO LOAD (RPM) | | 4800/7000 |
| ROTOR INERTIA (Kg-m ²) [lb-in ²] | | 6.6x10 ⁻⁸ [2.258x10 ⁻⁵] |
| WEIGHT (Kg) [lb] | | 0.07 [0.154] |

PERMISSIBLE RADIAL+AXIAL FORCE



| TEMPERATURE RISE: MAX.80°C (MOTOR STANDSTILL; FOR 2 PHASE ENERGIZED) | AXIAL-FORCE Fa (N) | Fr=2 |
|------------------------------------------------------------------------------------|---------------------|--------------|
| AMBIENT TEMPERATURE -10°~ 50°C [14°F ~ 122°F] | DISTANCE a (mm) | 10 |
| INSULATION RESISTANCE 100 MOhm (UNDER NORMAL TEMPERATURE AND HUMIDITY) | RADIAL-FORCE Fr (N) | 10 |
| INSULATION CLASS B 130° [266°F] | | AXIAL RADIAL |
| DIELECTRIC STRENGTH 500VAC FOR 5 SEC. (BETWEEN THE MOTOR COILS AND THE MOTOR CASE) | SHAFT PLAY (mm) | 0.08 0.02 |
| AMBIENT HUMIDITY MAX. 85% (NO CONDENSATION) | AT LOAD MAX: (N) | 4.5 4.5 |

| WIRING DIAGRAM | | | | | |
|--------------------|-----|-------|----------|---------------------------------|---------------|
| | PIN | COLOR | FUNCTION | DESCRIPTION | LEAD GAUGE |
| MOTOR 8 POL. | 6 | RED | U | | UL1007 AWG 26 |
| | 7 | BRN | V | | |
| | 8 | BLK | W | | |
| HALL 24 IMPL. REV. | 1 | BLU | Vcc | SUPPLY VOLTAGE FOR HALL SENSORS | UL1007 AWG28 |
| | 2 | RED | HALL A | | |
| | 3 | YEL | HALL B | | |
| | 4 | BRN | HALL C | | |
| | 5 | GRN | GND | GROUND FOR HALL SENSORS | |

STAR CONNECTING PHASE A RED PHASE B BRN PHASE C BLK

| REV | DESCRIPTION | DATE | DRN |
|-----|-------------------|----------|------|
| 4 | UPDT. TOL. 2-M2.5 | 08.09.17 | G.S. |
| 3 | change values | 08.06.16 | A.S. |
| 2 | NEW AWG NO. | 04.10.12 | J.W. |



DB22M01

| SCALE | FREE | APVD | B.W. | 23.05.07 |
|-------|------|-----------|------|----------|
| X | ±0.5 | CHKD | | |
| 1PL | ±0.2 | DRN | J.W. | 23.05.07 |
| 2PL | ±0.1 | SIGNATURE | | DATE |
| ANGLE | ±30' | | | |

BRUSHLESS DC MOTOR

DWG.NO

DB22M01